

## TEST REPORT

CheckCode:616124  
Report No.:C202010120309-1E

**Applicant:** Jiangsu Luoke Electric Group Co., Ltd.  
**Address:** No.55, Palm Road, Zhonglou Development Zone, Changzhou City, Jiangsu Province

**The following sample information was submitted and identified by/on the behalf of the client**

Name: Stator

Date of Receipt: Oct. 16, 2020 Test Period: Oct. 16, 2020 – Oct. 22, 2020

**Test Request:** Please refer to following page(s).**Test Result:** Please refer to following page(s).**Conclusion:** Please refer to following page(s).Edited by Chen Zhimin Reviewed by Huang Yingkun Approved by Zheng Xiaojing

扫一扫 验真伪

Seal of:

GUANGZHOU GRG METROLOGY &amp; TEST CO., LTD.

Issue date: Oct. 22, 2020

This test report is responsible for the tested samples only. Without permission of the test center this test report is not permitted to be duplicated in extracts. The test report is invalid without the specialized stamp of GUANGZHOU GRG METROLOGY & TEST CO., LTD. The test report is invalid if altered. Objections to the test report must be submitted to GUANGZHOU GRG METROLOGY & TEST CO., LTD. within 15 days.

**GUANGZHOU GRG METROLOGY & TEST CO., LTD.**Address: 163 Pingyun Road West of Huangpu Avenue Tianhe District Guangzhou City, 510656, P. R. China  
Tel: 4006020999 Fax: +86-020-38698685 Website: <http://www.grgtest.com>

# TEST REPORT

CheckCode:616124  
Report No.:C202010120309-1E

No.	Test Item	Client and Regulation Requirements	Conclusion
1	RoHS Directive (EU) 2015/863 amending Annex II to Directive 2011/65/EU	Pb, Cd, Hg, Cr(VI), PBBs, PBDEs, DEHP, BBP, DBP, DIBP	Comply

## Sample description:

Sample No.	Description
1	Dk-grey metal silicon steel sheet
2	White fiber thread ( On No.1 )
3	Red-brown coating ( On No.1 )
4	Silvery metal wire ( Base of No.3 )
5	Copper-colored coating ( On No.1 )
6	Copper-colored metal wire ( Base of No.5 )
7	White translucent plastic sheet ( In No.3 )
8	White plastic shell ( On No.1 )
9	White fiber tube ( On No.8 )
10	Silvery metal terminal ( In No.8 )
11	White fiber jacket with red printing ( On No.1 )
12	White fiber jacket with black printing ( On No.1 )
13	White fiber jacket ( On No.1 )
14	Translucent plastic sheet ( In No.13 )
15	White fiber jacket ( In No.14 )
16	Copper-colored metal wire ( In No.15 )
17	Translucent plastic shell ( On No.11 )
18	Beige translucent plastic shell ( In No.17 )
19	Silvery-grey metal part ( In No.18 )
20	White plastic shell ( In No.1 )
21	White plastic strip ( In No.20 )

## GUANGZHOU GRG METROLOGY & TEST CO., LTD.

Address: 163 Pingyun Road West of Huangpu Avenue Tianhe District Guangzhou City, 510656, P. R. China  
Tel: 4006020999 Fax: +86-020-38698685 Website: <http://www.grgtest.com>

## TEST REPORT

CheckCode:616124  
Report No.:C202010120309-1E

## Test Methods:

Test Item(s)	Test method	Measuring instrument	Client's Limit
Lead (Pb)	IEC 62321-5:2013	ICP-OES/AAS	600 mg/kg
Cadmium (Cd)	IEC 62321-5:2013	ICP-OES	60 mg/kg
Mercury (Hg)	IEC 62321-4:2013 +AMD1:2017	ICP-OES	600 mg/kg
Hexavalent Chromium [Cr(VI)]	IEC 62321-7-2:2017	UV-Vis	600 mg/kg
	IEC 62321-7-1:2015	UV-Vis	/
Polybrominated Biphenyls (PBBs)	IEC 62321-6:2015	GC-MS	600 mg/kg
Polybrominated Diphenyl Ethers (PBDEs)	IEC 62321-6:2015	GC-MS	600 mg/kg
Bis(2-ethylhexyl) phthalate (DEHP)	IEC 62321-8:2017	GC-MS	600 mg/kg
Butyl benzyl phthalate (BBP)	IEC 62321-8:2017	GC-MS	600 mg/kg
Dibutyl phthalate (DBP)	IEC 62321-8:2017	GC-MS	600 mg/kg
Diisobutyl phthalate (DIBP)	IEC 62321-8:2017	GC-MS	600 mg/kg

## Test result(s):

Test Item	Sample			Unit	MDL
	1	4	6		
Lead (Pb)	N.D.	25	22	mg/kg	2
Cadmium (Cd)	N.D.	N.D.	N.D.	mg/kg	2
Mercury (Hg)	N.D.	N.D.	N.D.	mg/kg	2
Hexavalent Chromium [Cr(VI)]	N.D.	N.D.	N.D.	µg/cm <sup>2</sup>	0.10

## GUANGZHOU GRG METROLOGY &amp; TEST CO., LTD.

Address: 163 Pingyun Road West of Huangpu Avenue Tianhe District Guangzhou City, 510656, P. R. China  
Tel: 4006020999 Fax: +86-020-38698685 Website: <http://www.grgtest.com>

## TEST REPORT

CheckCode:616124  
Report No.:C202010120309-1E

Test Item	Sample			Unit	MDL
	10	16	19		
Lead (Pb)	63	39	67	mg/kg	2
Cadmium (Cd)	N.D.	N.D.	N.D.	mg/kg	2
Mercury (Hg)	N.D.	N.D.	N.D.	mg/kg	2
Hexavalent Chromium [Cr(VI)]	N.D.	N.D.	N.D.	µg/cm <sup>2</sup>	0.10

Test Item	Sample				Unit	MDL
	2	3	5	7		
Lead (Pb)	N.D.	N.D.	N.D.	N.D.	mg/kg	2
Cadmium (Cd)	N.D.	N.D.	N.D.	N.D.	mg/kg	2
Mercury (Hg)	N.D.	N.D.	N.D.	N.D.	mg/kg	2
Hexavalent Chromium [Cr(VI)]	N.D.	N.D.	N.D.	N.D.	mg/kg	8

Test Item	Sample				Unit	MDL
	8	9	11	12		
Lead (Pb)	N.D.	N.D.	N.D.	N.D.	mg/kg	2
Cadmium (Cd)	N.D.	N.D.	N.D.	N.D.	mg/kg	2
Mercury (Hg)	N.D.	N.D.	N.D.	N.D.	mg/kg	2
Hexavalent Chromium [Cr(VI)]	N.D.	N.D.	N.D.	N.D.	mg/kg	8

Test Item	Sample				Unit	MDL
	13	14	15	17		
Lead (Pb)	N.D.	N.D.	N.D.	N.D.	mg/kg	2
Cadmium (Cd)	N.D.	N.D.	N.D.	N.D.	mg/kg	2
Mercury (Hg)	N.D.	N.D.	N.D.	N.D.	mg/kg	2
Hexavalent Chromium [Cr(VI)]	N.D.	N.D.	N.D.	N.D.	mg/kg	8

**GUANGZHOU GRG METROLOGY & TEST CO., LTD.**

Address: 163 Pingyun Road West of Huangpu Avenue Tianhe District Guangzhou City, 510656, P. R. China  
Tel: 4006020999 Fax: +86-020-38698685 Website: <http://www.grgtest.com>



## TEST REPORT

CheckCode:616124  
Report No.:C202010120309-1E

Test Item	Sample			Unit	MDL
	18	20	21		
Lead (Pb)	N.D.	N.D.	N.D.	mg/kg	2
Cadmium (Cd)	N.D.	N.D.	N.D.	mg/kg	2
Mercury (Hg)	N.D.	N.D.	N.D.	mg/kg	2
Hexavalent Chromium [Cr(VI)]	N.D.	N.D.	N.D.	mg/kg	8

Test Item	Sample				Unit	MDL
	2	3	5	7		
Sum of PBBs	N.D.	N.D.	N.D.	N.D.	mg/kg	---
Monobromobiphenyl	N.D.	N.D.	N.D.	N.D.	mg/kg	50
Dibromobiphenyl	N.D.	N.D.	N.D.	N.D.	mg/kg	50
Tribromobiphenyl	N.D.	N.D.	N.D.	N.D.	mg/kg	50
Tetrabromobiphenyl	N.D.	N.D.	N.D.	N.D.	mg/kg	50
Pentabromobiphenyl	N.D.	N.D.	N.D.	N.D.	mg/kg	50
Hexabromobiphenyl	N.D.	N.D.	N.D.	N.D.	mg/kg	50
Heptabromobiphenyl	N.D.	N.D.	N.D.	N.D.	mg/kg	50
Octabromobiphenyl	N.D.	N.D.	N.D.	N.D.	mg/kg	50
Nonabromobiphenyl	N.D.	N.D.	N.D.	N.D.	mg/kg	50
Decabromobiphenyl	N.D.	N.D.	N.D.	N.D.	mg/kg	50
Sum of PBDEs	N.D.	N.D.	N.D.	N.D.	mg/kg	---
Monobromodiphenyl ether	N.D.	N.D.	N.D.	N.D.	mg/kg	50
Dibromodiphenyl ether	N.D.	N.D.	N.D.	N.D.	mg/kg	50
Tribromodiphenyl ether	N.D.	N.D.	N.D.	N.D.	mg/kg	50
Tetrabromodiphenyl ether	N.D.	N.D.	N.D.	N.D.	mg/kg	50
Pentabromodiphenyl ether	N.D.	N.D.	N.D.	N.D.	mg/kg	50
Hexabromodiphenyl ether	N.D.	N.D.	N.D.	N.D.	mg/kg	50
Heptabromodiphenyl ether	N.D.	N.D.	N.D.	N.D.	mg/kg	50

## GUANGZHOU GRG METROLOGY &amp; TEST CO., LTD.

Address: 163 Pingyun Road West of Huangpu Avenue Tianhe District Guangzhou City, 510656, P. R. China  
Tel: 4006020999 Fax: +86-020-38698685 Website: <http://www.grgtest.com>

## TEST REPORT

CheckCode:616124  
Report No.:C202010120309-1E

Test Item	Sample				Unit	MDL
	2	3	5	7		
Octabromodiphenyl ether	N.D.	N.D.	N.D.	N.D.	mg/kg	50
Nonabromodiphenyl ether	N.D.	N.D.	N.D.	N.D.	mg/kg	50
Decabromodiphenyl ether	N.D.	N.D.	N.D.	N.D.	mg/kg	50

Test Item	Sample				Unit	MDL
	8	9	11	12		
Sum of PBBs	N.D.	N.D.	N.D.	N.D.	mg/kg	---
Monobromobiphenyl	N.D.	N.D.	N.D.	N.D.	mg/kg	50
Dibromobiphenyl	N.D.	N.D.	N.D.	N.D.	mg/kg	50
Tribromobiphenyl	N.D.	N.D.	N.D.	N.D.	mg/kg	50
Tetrabromobiphenyl	N.D.	N.D.	N.D.	N.D.	mg/kg	50
Pentabromobiphenyl	N.D.	N.D.	N.D.	N.D.	mg/kg	50
Hexabromobiphenyl	N.D.	N.D.	N.D.	N.D.	mg/kg	50
Heptabromobiphenyl	N.D.	N.D.	N.D.	N.D.	mg/kg	50
Octabromobiphenyl	N.D.	N.D.	N.D.	N.D.	mg/kg	50
Nonabromobiphenyl	N.D.	N.D.	N.D.	N.D.	mg/kg	50
Decabromobiphenyl	N.D.	N.D.	N.D.	N.D.	mg/kg	50
Sum of PBDEs	N.D.	N.D.	N.D.	N.D.	mg/kg	---
Monobromodiphenyl ether	N.D.	N.D.	N.D.	N.D.	mg/kg	50
Dibromodiphenyl ether	N.D.	N.D.	N.D.	N.D.	mg/kg	50
Tribromodiphenyl ether	N.D.	N.D.	N.D.	N.D.	mg/kg	50
Tetrabromodiphenyl ether	N.D.	N.D.	N.D.	N.D.	mg/kg	50
Pentabromodiphenyl ether	N.D.	N.D.	N.D.	N.D.	mg/kg	50
Hexabromodiphenyl ether	N.D.	N.D.	N.D.	N.D.	mg/kg	50
Heptabromodiphenyl ether	N.D.	N.D.	N.D.	N.D.	mg/kg	50
Octabromodiphenyl ether	N.D.	N.D.	N.D.	N.D.	mg/kg	50
Nonabromodiphenyl ether	N.D.	N.D.	N.D.	N.D.	mg/kg	50

## GUANGZHOU GRG METROLOGY &amp; TEST CO., LTD.

Address: 163 Pingyun Road West of Huangpu Avenue Tianhe District Guangzhou City, 510656, P. R. China  
Tel: 4006020999 Fax: +86-020-38698685 Website: <http://www.grgtest.com>

## TEST REPORT

CheckCode:616124  
Report No.:C202010120309-1E

Test Item	Sample				Unit	MDL
	8	9	11	12		
Decabromodiphenyl ether	N.D.	N.D.	N.D.	N.D.	mg/kg	50

Test Item	Sample				Unit	MDL
	13	14	15	17		
Sum of PBBs	N.D.	N.D.	N.D.	N.D.	mg/kg	---
Monobromobiphenyl	N.D.	N.D.	N.D.	N.D.	mg/kg	50
Dibromobiphenyl	N.D.	N.D.	N.D.	N.D.	mg/kg	50
Tribromobiphenyl	N.D.	N.D.	N.D.	N.D.	mg/kg	50
Tetrabromobiphenyl	N.D.	N.D.	N.D.	N.D.	mg/kg	50
Pentabromobiphenyl	N.D.	N.D.	N.D.	N.D.	mg/kg	50
Hexabromobiphenyl	N.D.	N.D.	N.D.	N.D.	mg/kg	50
Heptabromobiphenyl	N.D.	N.D.	N.D.	N.D.	mg/kg	50
Octabromobiphenyl	N.D.	N.D.	N.D.	N.D.	mg/kg	50
Nonabromobiphenyl	N.D.	N.D.	N.D.	N.D.	mg/kg	50
Decabromobiphenyl	N.D.	N.D.	N.D.	N.D.	mg/kg	50
Sum of PBDEs	N.D.	N.D.	N.D.	N.D.	mg/kg	---
Monobromodiphenyl ether	N.D.	N.D.	N.D.	N.D.	mg/kg	50
Dibromodiphenyl ether	N.D.	N.D.	N.D.	N.D.	mg/kg	50
Tribromodiphenyl ether	N.D.	N.D.	N.D.	N.D.	mg/kg	50
Tetrabromodiphenyl ether	N.D.	N.D.	N.D.	N.D.	mg/kg	50
Pentabromodiphenyl ether	N.D.	N.D.	N.D.	N.D.	mg/kg	50
Hexabromodiphenyl ether	N.D.	N.D.	N.D.	N.D.	mg/kg	50
Heptabromodiphenyl ether	N.D.	N.D.	N.D.	N.D.	mg/kg	50
Octabromodiphenyl ether	N.D.	N.D.	N.D.	N.D.	mg/kg	50
Nonabromodiphenyl ether	N.D.	N.D.	N.D.	N.D.	mg/kg	50
Decabromodiphenyl ether	N.D.	N.D.	N.D.	N.D.	mg/kg	50

## GUANGZHOU GRG METROLOGY &amp; TEST CO., LTD.

Address: 163 Pingyun Road West of Huangpu Avenue Tianhe District Guangzhou City, 510656, P. R. China  
Tel: 4006020999 Fax: +86-020-38698685 Website: <http://www.grgtest.com>

## TEST REPORT

CheckCode:616124  
Report No.:C202010120309-1E

Test Item	Sample			Unit	MDL
	18	20	21		
Sum of PBBs	N.D.	N.D.	N.D.	mg/kg	---
Monobromobiphenyl	N.D.	N.D.	N.D.	mg/kg	50
Dibromobiphenyl	N.D.	N.D.	N.D.	mg/kg	50
Tribromobiphenyl	N.D.	N.D.	N.D.	mg/kg	50
Tetrabromobiphenyl	N.D.	N.D.	N.D.	mg/kg	50
Pentabromobiphenyl	N.D.	N.D.	N.D.	mg/kg	50
Hexabromobiphenyl	N.D.	N.D.	N.D.	mg/kg	50
Heptabromobiphenyl	N.D.	N.D.	N.D.	mg/kg	50
Octabromobiphenyl	N.D.	N.D.	N.D.	mg/kg	50
Nonabromobiphenyl	N.D.	N.D.	N.D.	mg/kg	50
Decabromobiphenyl	N.D.	N.D.	N.D.	mg/kg	50
Sum of PBDEs	N.D.	N.D.	N.D.	mg/kg	---
Monobromodiphenyl ether	N.D.	N.D.	N.D.	mg/kg	50
Dibromodiphenyl ether	N.D.	N.D.	N.D.	mg/kg	50
Tribromodiphenyl ether	N.D.	N.D.	N.D.	mg/kg	50
Tetrabromodiphenyl ether	N.D.	N.D.	N.D.	mg/kg	50
Pentabromodiphenyl ether	N.D.	N.D.	N.D.	mg/kg	50
Hexabromodiphenyl ether	N.D.	N.D.	N.D.	mg/kg	50
Heptabromodiphenyl ether	N.D.	N.D.	N.D.	mg/kg	50
Octabromodiphenyl ether	N.D.	N.D.	N.D.	mg/kg	50
Nonabromodiphenyl ether	N.D.	N.D.	N.D.	mg/kg	50
Decabromodiphenyl ether	N.D.	N.D.	N.D.	mg/kg	50

Test Item	Sample				Unit	MDL
	2	3	5	7		
Bis(2-ethylhexyl) phthalate (DEHP)	N.D.	N.D.	N.D.	N.D.	mg/kg	50
Butyl benzyl phthalate (BBP)	N.D.	N.D.	N.D.	N.D.	mg/kg	50

## GUANGZHOU GRG METROLOGY &amp; TEST CO., LTD.

Address: 163 Pingyun Road West of Huangpu Avenue Tianhe District Guangzhou City, 510656, P. R. China  
Tel: 4006020999 Fax: +86-020-38698685 Website: <http://www.grgtest.com>



## TEST REPORT

CheckCode:616124  
Report No.:C202010120309-1E

Test Item	Sample				Unit	MDL
	2	3	5	7		
Dibutyl phthalate (DBP)	N.D.	N.D.	N.D.	N.D.	mg/kg	50
Diisobutyl phthalate (DIBP)	N.D.	N.D.	N.D.	N.D.	mg/kg	50

Test Item	Sample				Unit	MDL
	8	9	11	12		
Bis(2-ethylhexyl) phthalate (DEHP)	N.D.	N.D.	N.D.	N.D.	mg/kg	50
Butyl benzyl phthalate (BBP)	N.D.	N.D.	N.D.	N.D.	mg/kg	50
Dibutyl phthalate (DBP)	N.D.	N.D.	N.D.	N.D.	mg/kg	50
Diisobutyl phthalate (DIBP)	N.D.	N.D.	N.D.	N.D.	mg/kg	50

Test Item	Sample				Unit	MDL
	13	14	15	17		
Bis(2-ethylhexyl) phthalate (DEHP)	N.D.	N.D.	N.D.	N.D.	mg/kg	50
Butyl benzyl phthalate (BBP)	N.D.	N.D.	N.D.	N.D.	mg/kg	50
Dibutyl phthalate (DBP)	N.D.	N.D.	N.D.	N.D.	mg/kg	50
Diisobutyl phthalate (DIBP)	N.D.	N.D.	N.D.	N.D.	mg/kg	50

Test Item	Sample			Unit	MDL
	18	20	21		
Bis(2-ethylhexyl) phthalate (DEHP)	N.D.	N.D.	N.D.	mg/kg	50
Butyl benzyl phthalate (BBP)	N.D.	N.D.	N.D.	mg/kg	50
Dibutyl phthalate (DBP)	N.D.	N.D.	N.D.	mg/kg	50
Diisobutyl phthalate (DIBP)	N.D.	N.D.	N.D.	mg/kg	50

## GUANGZHOU GRG METROLOGY &amp; TEST CO., LTD.

Address: 163 Pingyun Road West of Huangpu Avenue Tianhe District Guangzhou City, 510656, P. R. China  
Tel: 4006020999 Fax: +86-020-38698685 Website: <http://www.grgtest.com>

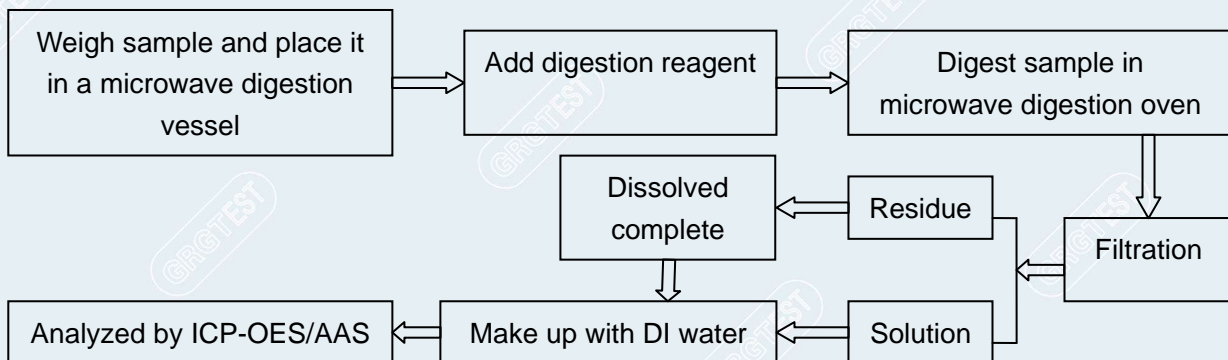
# TEST REPORT

CheckCode:616124  
Report No.:C202010120309-1E

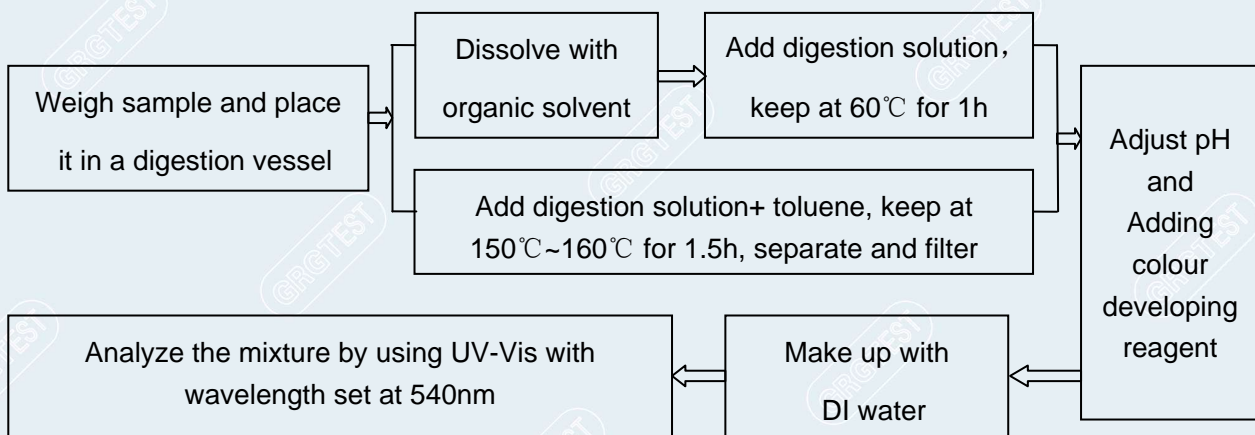
- Remark:
- 1) mg/kg = ppm
  - 2) MDL = Method Detection Limit
  - 3) "N.D." = Not Detected (Below Method Detection Limit)
  - 4) For metal sample
    - a. The sample is negative for Cr(VI) if Cr(VI) is N.D.(concentration less than  $0.10 \mu\text{g}/\text{cm}^2$ ).The sample coating is considered a non- Cr(VI) based coating.
    - b. The sample is positive for Cr(VI) if the Cr(VI) concentration is greater than  $0.13 \mu\text{g}/\text{cm}^2$ .The sample coating is considered to contain Cr(VI).
    - c. The result between  $0.10 \mu\text{g}/\text{cm}^2$  and  $0.13 \mu\text{g}/\text{cm}^2$  is considered to be inconclusive.

Unavoidable coating variations may influence the determination.

## Test Process for Pb / Cd / Hg



## Test Process for Cr (VI) (Nonmetal)



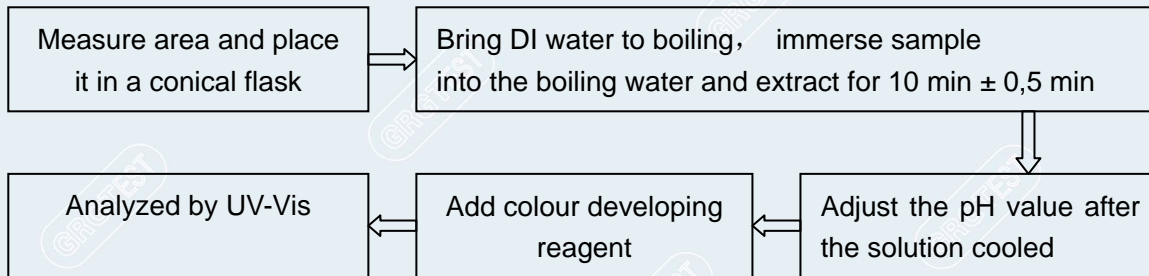
### GUANGZHOU GRG METROLOGY & TEST CO., LTD.

Address: 163 Pingyun Road West of Huangpu Avenue Tianhe District Guangzhou City, 510656, P. R. China  
Tel: 4006020999 Fax: +86-020-38698685 Website: <http://www.grgtest.com>

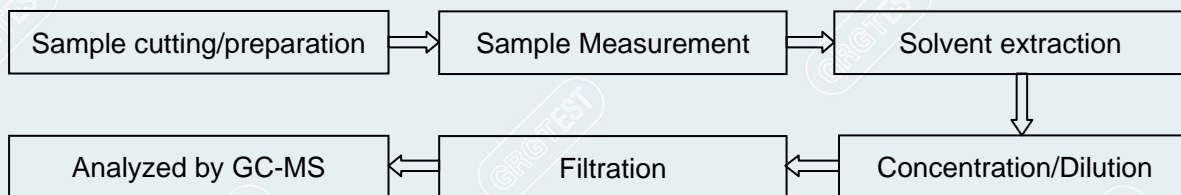
# TEST REPORT

CheckCode:616124  
Report No.:C202010120309-1E

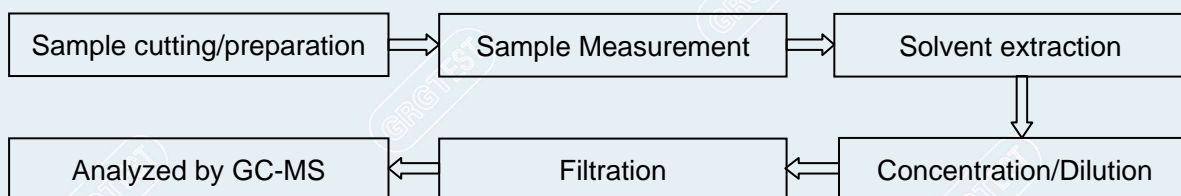
## Test Process for Cr (VI) (metal / plating)



## Test Process for PBBs & PBDEs



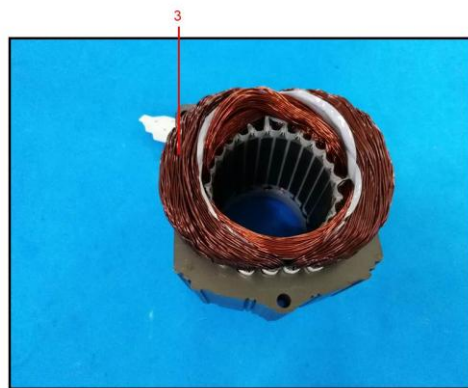
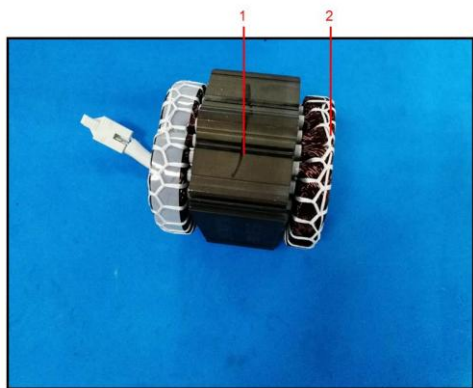
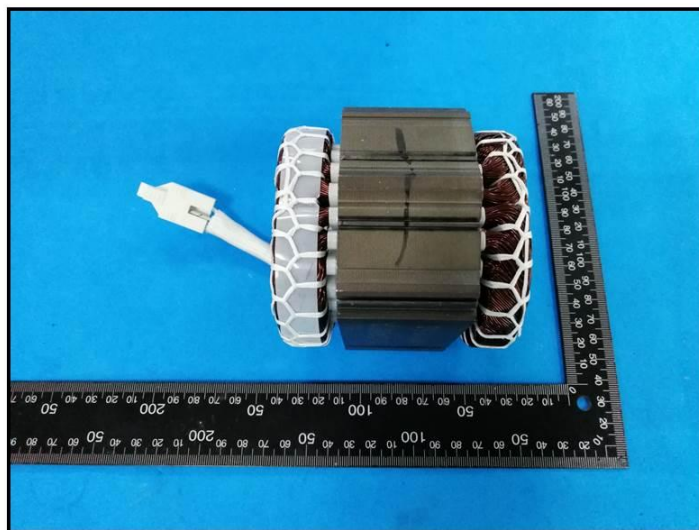
## Test Process for Phthalates



# TEST REPORT

CheckCode:616124  
Report No.:C202010120309-1E

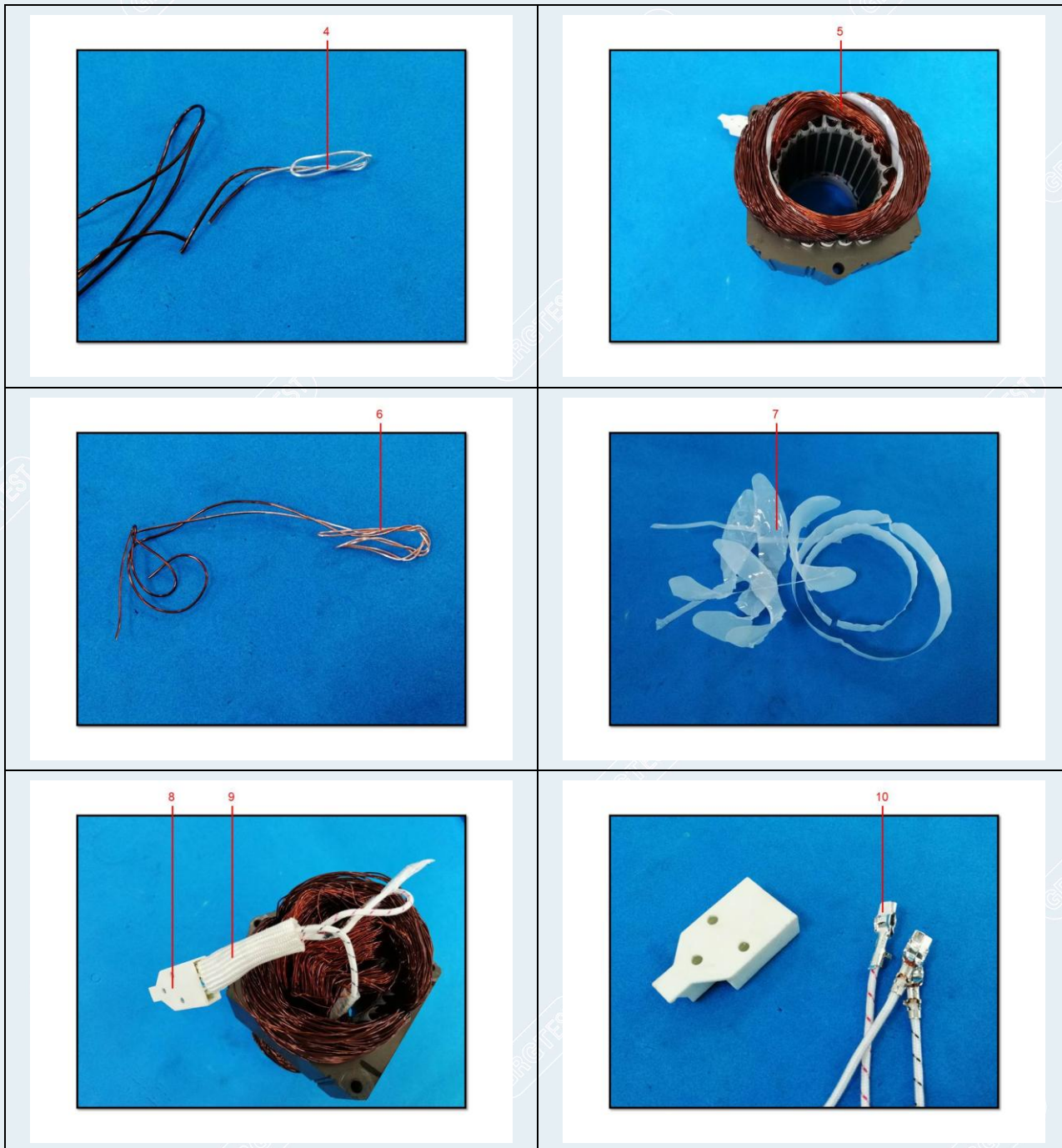
Photo of Sample





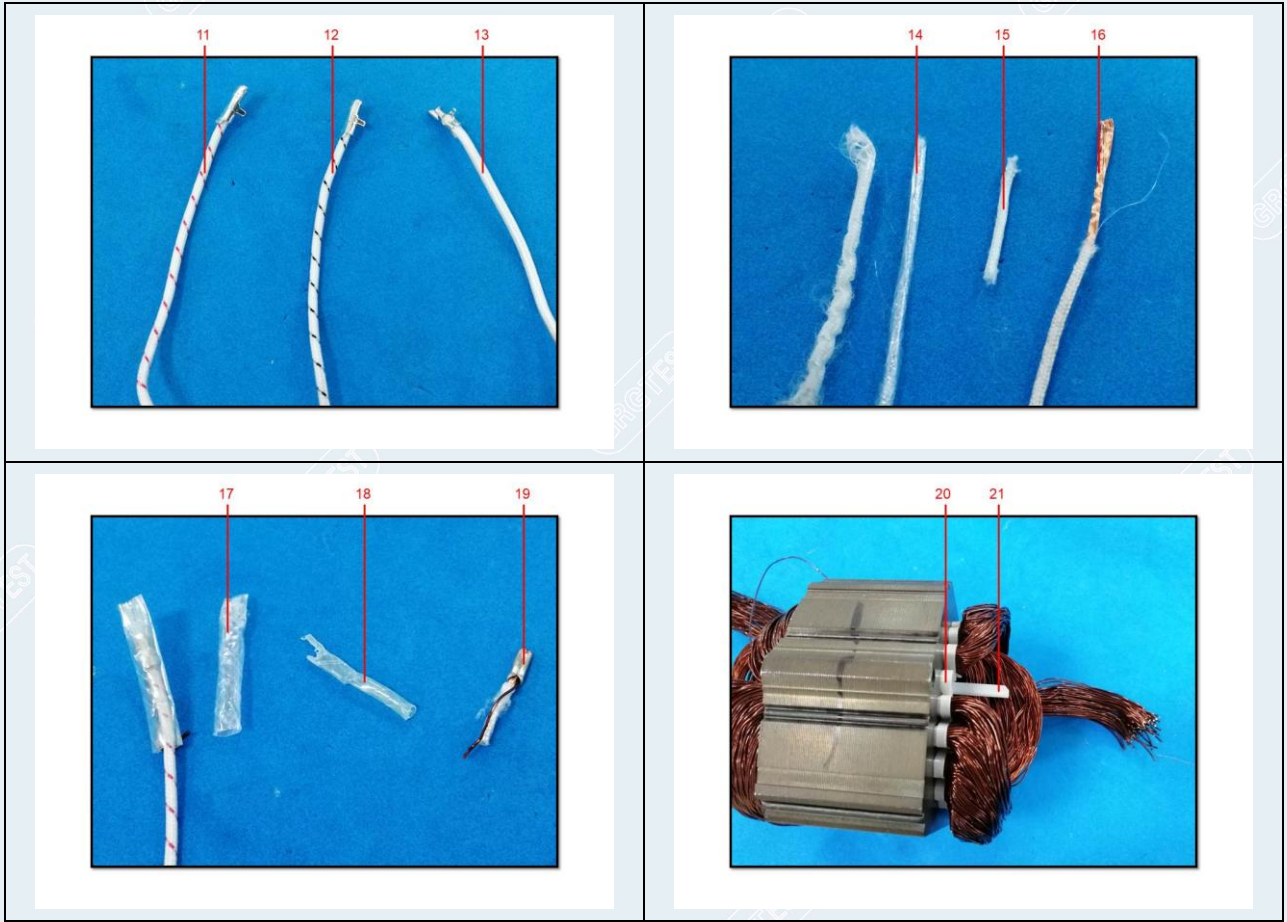
# TEST REPORT

CheckCode:616124  
Report No.:C202010120309-1E



# TEST REPORT

CheckCode:616124  
Report No.:C202010120309-1E



-----End of Report-----